



HYDRO

CAPABILITIES STATEMENT

MODULAR METAL SOLUTIONS FOR GENERATIONS

Moran Iron Works | 11739 M68/33 | Onaway, MI USA | 989.733.2011 | moraniron.com

CORE COMPETENCIES

POINT OF CONTACT

Lee Fayssoux
Sales & Marketing Manager
lee@moraniron.com
(989)733-2011

ABOUT

Moran Iron Works (MIW) is a dynamic fabrication facility specializing in large, modular, custom welding and industrial fabrication projects with over four decades of experience in a variety of industries including industrial, power, marine, and hydraulic structures. Our diversified portfolio and company culture of integrity creates the polished, state-of-the-art skill behind each project.

DIFFERENTIATORS

Capacity & Workforce Training

- 125,000 sq. ft. fabrication and machining facility
- Highly-trained workforce that allows quick and seamless fabrication
- Turnkey project solutions from estimating to installing

Equipment & Facilities

- Indoor overhead cranes
- CNC plasma cutting
- Advanced rolling and forming
- Robotic welding capabilities
- High-wire corridor gives access to haul large modules
- Deepwater Port allows for unlimited laydown and shipping in the Great Lakes tributaries

Quality & Safety

- CWI and CWS certifications ensuring impeccable quality
- All safety/quality personnel have average of 17 years' experience
- Each shop employee trained in PPE, Overhead Crane, Manlift Powered Industrial Trucks, Confined Space, Hazcommunication, Fall Protection, Lockout-Tag Out, and Machine Guarding

CERTIFICATIONS

American Institute of Steel Construction

- (CBR) Major Steel Bridges
- (IBR) Certified Bridge Fabricator – Intermediate
- (HYD) Hydraulic Steel Structures
- (FCE) Fracture Critical Endorsement
- (P2) Sophisticated Paint Endorsement

American Welding Society

- Certified Welding Fabricator

National Commission Certification of Crane Operators

COMPANY DATA

Year Established

1978

UDI

S89ZWMV3CM63

Cage Code

0NYK6

NAICS Codes

332312, 336611, 333611, 332313, 332311,
332410, 332470, 332710



C E R T I F I E D





FOUR (4) SETS OF STOP LOGS

Moran Iron Works was awarded the contract to fabricate, machine, paint, package, and deliver four (4) sets of stop logs to the Rock Island Dam.

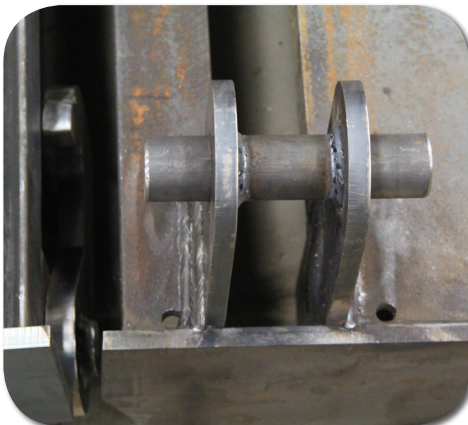
Customer	Chelan County PUD No. 1
Location	Rock Island, WA
Weight	175,098 lbs
Material	A572 GR 50 Carbon Steel A276 304 Stainless Steel A36 Carbon Structural Steel
Dates of Performance	Jun. 2017 - Feb. 2018



LOG SCREENS

Moran Iron Works was awarded the contract to fabricate and deliver 96 log screen inserts. All components were "hot dip" galvanized following fabrication.

Customer	Eastern Generation
Location	Astoria, NY
Weight	29,440 lbs
Material	3/16" Hot Rolled Carbon Steel
Dates of Performance	Jan. 2017 - Mar. 2017



PAST PERFORMANCE



With our (FCE) Fracture Critical Endorsement, (HYD) Hydraulic Steel Structures, and (P2) Sophisticated Paint Endorsement certifications by the AISC, Moran Iron Works has the capability to custom-fabricate:

GATES

- Tainter Gates
- Miter Gates
- Sluice Gates
- Slide Gates
- Roller Gates
- Control Gates
- Wicket Gates

SCREENS

- Log Screens
- Traveling Screens

LOGS & BULKHEADS

- Stop Logs
- Bulkheads
- Lifting Beams
- Pump Frames

TRASH RACKS

- Stackable Frames
- Screen Inserts
- Fine Screen Attachments
- Custom Designed/Handling Storage Fixtures
- Beam/Trolley/Hoist Systems

OTHER

- Penstocks
- Ice Dam Beam Systems
- Dam Boards
- Spillway Systems

CAPABILITIES